

Stroller Adapter

Assembly Instructions

**IMPORTANT: READ THESE INSTRUCTIONS CAREFULLY BEFORE USE.
YOUR CHILD'S SAFETY MAY BE AFFECTED IF YOU DO NOT FOLLOW
THESE INSTRUCTIONS.**

WARNING

DO NOT LEAVE CHILDREN UNATTENDED.

THE INFASECURE INFANT CARRIER ADAPTORS ARE THE ONLY ADAPTORS DESIGNED TO FIT THE INFASECURE INFANT CARRIER AND STROLLER. DO NOT USE WITH ANY OTHER STROLLER.

ALWAYS APPLY THE STROLLER BRAKES WHEN PLACING THE INFANT CARRIER INTO THE STROLLER.

WHILE THESE ADAPTORS ALLOW THE INFANT CARRIER TO BE FITTED FACING FORWARDS OR BACKWARDS, WE STRONGLY RECOMMEND THAT THE INFANT CARRIER IS FITTED SO THAT THE BABY FACES THE STROLLER HANDLE.

SECURE THE CHILD IN THE HARNESS AT ALL TIMES.

DO NOT LEAVE THE CHILD IN THE INFANT CARRIER FOR EXTENDED PERIODS.

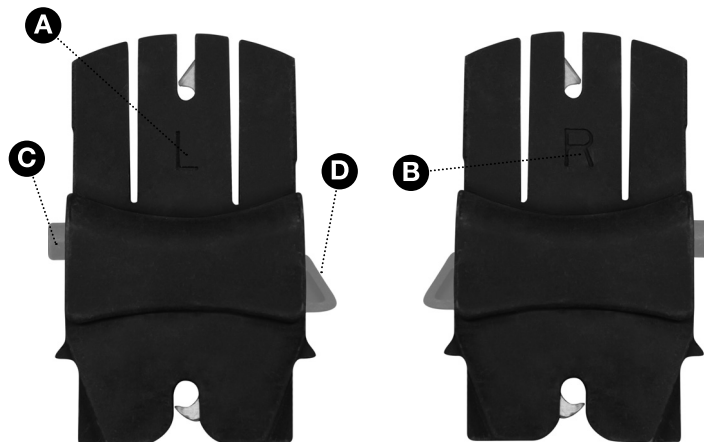
THE INFANT CARRIER IS DESIGNED TO PROVIDE MOBILITY OUTSIDE OF THE CAR BUT IT SHOULD NOT BE USED IN PLACE OF AN APPROPRIATE COT.

THE MAXIMUM WEIGHT OF THE CHILD USING THE INFANT CARRIER WHEN FITTED ONTO THE STROLLER IS 9KG (APPROXIMATELY 6 MONTHS OLD).

DO NOT MOVE OR PUSH THE STROLLER BY THE HANDLE OF THE INFANT CARRIER.

Parts List

- (A) Left Adaptor
- (B) Right Adaptor
- (C) Infant Carrier Release Button
- (D) Stroller Release Trigger



ⓘ Drawings in this manual are for illustration purposes only; actual product may vary. The manufacturer reserves the right to change any specification or features without prior notice.



INFASURE PTY LTD

Customer Service Phone: 02 4728 8090

Head Office And Registered Address:

110-114 Old Bathurst Rd, Emu Plains, NSW, 2750

P.O Box 487, Emu Plains, NSW, 2750

www.infasure.com.au

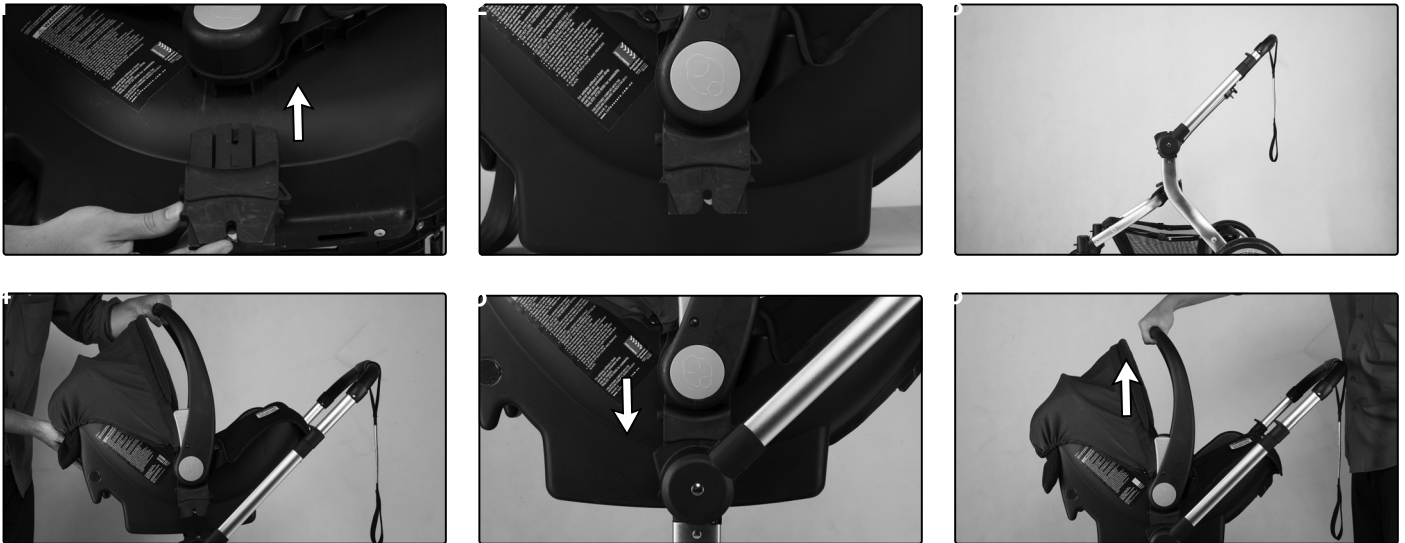
For model(s)

Infant Carriers: CS2013 / CS2113

Strollers: WG101

ISSUE A

Attach Infant Carrier to Stroller



ⓘ Always ensure brakes on the Stroller are engaged before converting.

Step 1. Insert each Adaptor into the slot under the carry handle of the infant carrier as shown ❶. The Adaptors are labelled L and R to indicate left and right, respectively.

ⓘ Adaptors will only fit on the corresponding sides on the Infant Carrier.

Step 2. Push the Adaptor into place ❷ and check to ensure that each adaptor has locked into place by gently pushing down on it. The Infant Carrier will now be ready to fit onto the Stroller.

Step 3. With the breaks applied and the seat unit removed from the Stroller ❸ (and stored in a safe place), position the Infant Carrier so the baby will be facing towards the stroller handle ❹. Guide the two Adaptors into the slots on the stroller where the seat unit was fitted, then push down until both sides click into position ❺. Check that it has locked into place by gently lifting the Infant Carrier ❻ and ensuring it does not detach.

Detach Infant Carrier from Stroller



ⓘ Always ensure brakes on the Stroller are engaged before converting.

Each Adaptor has two grey release buttons; the circular button releases the Adapter from the Infant Carrier and the trigger button releases the Infant Carrier from the Stroller.

Once the Adaptors have been fitted to the Infant Carrier, it does not need to be removed and can be left in place when the Infant Carrier is used in the car.

Step 1. Ensure that the Infant Carrier handle is locked in the carry position ❶.

Step 2. To release the Infant Carrier from the Stroller, press the trigger button ❷ ❸ on each of the Adaptor and lift the Infant Carrier off the Stroller.